



Lewis County Genealogical Society

PO Box 782

Chehalis WA 98532

<http://www.walcgs.org>

Volume #22 Issue # 4

July-Oct 2012

Officers

President – Bob McDole

(360) 266-0282

1st Vice President – Linda Patton

(360) 262-3672 susie@localaccess.com

2nd Vice President – Patty Olsen

(360) 219-6912 mctwert@aol.com

Secretary – Joann Hulse

(360) 748-4244 wjhulse@localaccess.com

Treasurer – Leslie Parnell

(360) 978-4267 lparnell@tds.net

Genealogist - Margie Lloyd

(360) 748-3069

Co-Editors of the bi-monthly

Newsletter are: Leslie Parnell

lparnell@tds.net &

Teresa Parnell-Jordan

jordanjunction@hotmail.com



Important Note:

The **web sites** listed in this newsletter are direct links – just click your mouse (while online). The above **emails** are only direct links if you use Outlook on your computer for email service.

Or open your email provider web site (hotmail, gmail, etc) and then copy & paste the email to your new outgoing message.

6 Nov 2012 Next board meeting will be held at 5:15 at the Vernetta Smith Timberland Library in Chehalis. All members are welcome.

20 Nov 2012 Meeting will be a “Show & Tell” and Annual Pot Luck beginning at 6pm. Voting will take place for the 2013-2014 Officers.

NOMINATING COMMITTEE is contacting all members for their willingness to serve as an officer for 2013-2014. **PLEASE THINK ABOUT VOLUNTEERING YOUR TIME.** All the board members work together to have a smoothly run society. **FRESH FACES AND MINDS CAN LEAD US ALL TO NEW PLACES.** New officers will assume their duties with the January 2013 board meeting.

LCGS MEETINGS

18 Sep 2012 – Guest Speaker Jim Johnson, Directory of Heritage Quest Library, will tell us about “Military Records”. Jim has been a guest speaker at past meetings, sharing his knowledge on a variety of genealogical topics. Meeting is at 7:00 pm at the PUD Auditorium at 345 Pacific Ave., Chehalis.

16 Oct 2012 - Laura Pemberton Sparr will again join us to speak on “Genealogical Methodology.” Laura, a Certified Genealogist, is a past president of WSGS. Meeting begins at 7:00pm at the PUD Auditorium at 345 Pacific Ave., Chehalis.



Diggin' for Roots

WELCOME NEW MEMBERS

Sarah **ASHLEY**, 77 Mercer St., #4N, New York, NY, 10012, seashley02@gmail.com
Searching surnames: SWARD; MEYER;
PARMENTER; JONES.

Melody **GUENTHER**, 582B Winston Creek Rd, Mossyrock, WA, 98564, ph 360-985-2896, mguenther@tds.net. Searching BARNETT;

BARRETT; WYATT; GILLILAND; SEEVER, SE
Missouri, Kentucky, Tennessee.

1930 MEXICAN CENSUS

Ancestry.com/mexico now has the 1930 Mexican census free this year. It contains 13 million census documents. However, there are no images for the Mexico City census as those records are missing. Over 31.8 million Americans are of Mexican descent so this should be a great research resource. (Printed from article in Willamette Valley Gen. Soc. newsletter, Feb. 2012; *The Beacon*, Sno-Isle Genealogical Society, Mar 2012)

The Quebec Family History Society launches new website

MONTREAL, January 15, 2012 — The Quebec Family History Society (QFHS) is proud to announce the launch of its new website at www.qfhs.ca. Located at the same address as the genealogical society's original site, the website features several new sections, such as Gary's Genealogical Picks, research tips, surname interests, and a bulletin board.

QFHS members researching their ancestors in Quebec will benefit from the new Jacques Gagné Church Compilations in the members' section. Long-time member Jacques Gagné has compiled historical information and the location of records for more than 1,000 English and French Protestant churches across the province, from 1759 to 1899.

The Quebec Family History Society is the largest English-language genealogical society in Quebec, Canada. Founded in 1977, it is a registered Canadian charity that helps people of all backgrounds research their family history. Its members, in addition to researching their Quebec roots, research historical records in all Canadian provinces and territories, the United States, the British Isles, and Western Europe. At the QFHS Heritage Centre and Library, members have free access to a collection of 6,000 books, manuscripts, and family histories, plus thousands of microfilms, microfiche, historical maps, and periodicals, and

access to billions of online genealogical records, including the world deluxe edition of Ancestry.ca. The Quebec Family History Society / La Société de l'histoire des familles du Québec
www.qfhs.ca qfhs@bellnet.ca 514-695-1502

NEW TO THE LCGS LIBRARY

ALASKA Business Directory by Peter Wood. All State directory compiled and edited by Alaska Information Service. Published by Peter Wood & Company. Copyright 1945. Donated by Margaret Iverson and placed at the Chehalis Timberland Library with our partial library collection.

BOOK REVIEW

Sandi Gaffney just finished reading a good mystery genealogy book, *In The Blood* by Steve Robinson. The book is about a genealogist who goes to England in search of a client's family.

HINTS & TIPS

At the end of every microfilm are miscellaneous records – things that may have fallen out of files (loose papers). *Laura Pemberton Sparr*.

E-mail- italics or underlining will not e-mail. Suggestions-capitalize first and last letters or bold the letters.

Pedigrees- it has been suggested for privacy and reduced chance of identity theft when posting your pedigree to only go back to grandparents.

FAMILY HISTORY CENTER – Chehalis is closed from August 27th through September 10th.

The **Seattle Genealogical Society** and Library's motto is "Search and Prove." The theme of SGS's 2012 Fall Seminar is "Re- Search and Prove." Re-examine research strategies with fresh eyes to break through "brick walls" and find those elusive ancestors. 20 October 2012

9:00 am – 4:00 pm Check-in at 8:30 am
Registration Cost: \$40 SGS Members
\$50 Non-Members \$12 Lunch

For Seminar Questions
Call: (206) 522-8658

(Tue-Sat, from 10am-3pm)

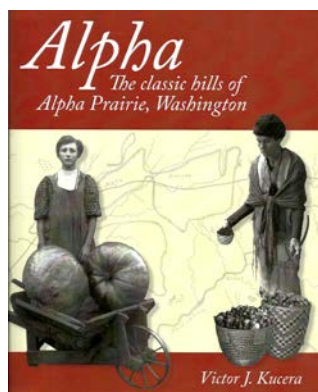
Email: SGSseminar@gmail.com

Website: www.SeattleGenealogicalSociety.org

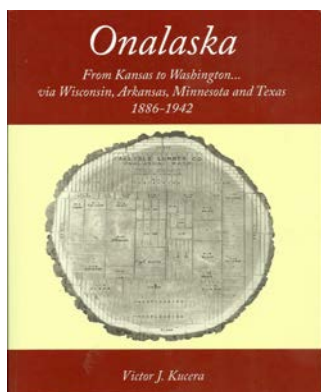
1940 US FEDERAL CENSUS ALL INDEXED

~~~~~

**October is “Family History Month”.** The Lewis County Genealogical Society will have a display case at the Vernetta Smith Chehalis Timberland Library during the month of October. Our theme is “Vanished”, towns no longer existing in Lewis County. Please contact Teresa Jordan if you would like to participate.



***Alpha, The classic hills of Alpha Prairie, Washington*** was released this summer and the author Vic Kucera has another well researched book on life in Lewis County. Alpha was a thriving community on the now named Centralia-Alpha Rd north of Onalaska.



***Onalaska, From Kansas to Washington. . . via Wisconsin, Arkansas, Minnesota and Texas, 1880-1942.*** Author Vic Kucera released this book in 2011. This is the story of William Carlisle, his

journey to Onalaska, Washington and the history of the first settlers of Onalaska, known

then as “Lower Alpha”. Wonderful reading! Vic is a descendant of original pioneer settlers of Alpha.

### ~WORTH REPEATING~

**GET A SECOND OPINION** - Having another person review your research could provide a needed “power surge” in the form of tips and suggestions you hadn’t thought of. Sometimes all it takes is a fresh pair of eyes – even talking out the problem with a family history minded friend can be helpful. Ask someone at your local genealogical society or an online genealogy buddy for help, and be sure to offer your help in return.

**6 Oct 2012**-Puget Sound Genealogical Society has scheduled A Genealogy Seminar titled “Digging Up Granny”, Tracing our Elusive Female Ancestors. Keynote speaker is Tames Alan’s Living History Lectures in costume. Port Orchard, WA. See flyer at next meeting. More info at [www.pusogensoc.org](http://www.pusogensoc.org).

### FAMILY SEARCH

The FamilySearch History Library is making its popular classes available at *FamilySearch.org*, where anyone anywhere in the world can access them for free at a time that is convenient for them. The classes have been offered on-site in Salt Lake City for years.

The online classes are a great complement to the free personal research assistance the Family History Library offers to its patrons in the family history centers worldwide.

There are currently over 20 Family History Library classes available online, with subjects ranging from European research to United States. The most popular offerings are the Beginning Research Series for Ireland and England and a class on descendency research.

All the classes can be accessed on [www.familysearch.org](http://www.familysearch.org) by clicking on **Free Online Classes** on the home page.

## Preservation Dos and Don'ts

### Don't's

- Never store family heirlooms in attics, wet basements, or garages. These areas can become extremely hot or cold and can expose your precious keepsakes to moisture.
- Don't use tape to repair or hold items in a scrapbook or album. Tape is very destructive; over time the adhesive will migrate from under the body of the tape and leave gummy residues that will stick pages together.
- Don't store precious heirloom textiles in any cedar, camphor or wood chest. Wood is acidic and gives off oils that can permanently stain linen, quilts and clothing stored inside. Line your old chests with aluminum foil or archival mat board to make them safe.
- Don't laminate! There is a great misconception that plastics last forever. In reality, plastics degrade over time to form acids and greasy plasticizers that will eventually destroy your rare documents. Lamination is also an irreversible process that cannot be fixed once applied.
- Never try to de-acidify, clean or treat artwork, documents and newspaper yourself.
- It is rarely OK to clean a textile yourself. Wet and dry cleaning are both harsh on fragile fibers. Often it is better to leave an old quilt or christening gown alone rather than subject it to cleaning, which can damage or destroy the item.

### Dos

- Store your family treasures separately from ordinary items in areas where the temperature is between 65 and 75 degrees Fahrenheit and between 35 percent and 55 percent humidity.

- Use adhesive corners to place photos in your album. There are archival tapes (filmoplast) but many adhesives claiming to be "archival" do not meet national standards for preservation.
- Store your old documents in Mylar, Melinex, polyester, polypropylene, or polyethylene plastic sleeves. These plastics are considered archival because that are inert and will not react with the items they store. They do not degrade in a destructive way and last longer than other plastics.
- Conservators train for years to learn how to safely assess and treat fragile documents and paper. It is a very tricky process and can lead to the destruction of your family treasure if done incorrectly. Consult an expert. Go to [www.aic.stanford.edu](http://www.aic.stanford.edu).
- Let an expert assess whether your heirloom textile can withstand washing.

**WISCONSIN HISTORICAL SOCIETY** has the largest collection of newspapers other than the Library of Congress.

Summer 2005, Vol. 37, No. 2

### Those Elusive Early Americans: Public Lands and Claims in the *American State Papers*, 1789–1837

The *American State Papers* is a 38-volume published compilation of executive and legislative records dating from 1789 to 1838. In these years, Congress retained a prominent role in settling claims against the federal government. The thousands of claims and other records in the *American State Papers* preserved from the archives and manuscript records of the Senate and House of Representatives contain a wealth of information on individuals and

families living in America during this period. (Chris Naylor is an archives technician in the Research Support Branch of the National Archives and Records Administration,

Washington, D.C. He earned B.A. degrees in history and German from the University of Maryland, College Park. )  
<http://www.archives.gov/publications/prologue/2005/summer/state-papers.html>

## GETTING TO KNOW OUR MEMBERS

Hi, I'm Sharolyn Wiley. I just joined the Lewis County Genealogical Society in January after receiving a treasured gift from a cousin. She had done research on my mother's side of the family for years and, at 74 years of age, decided to let me follow through, as she was more involved in a project on her father's side of the family. I've always loved old things and this has sparked a fire that is hard to tame. It is like an addiction, finding one more bit of the puzzle to tie parts of it together. I grew up in Kelso, Washington and went to Northwest College in Kirkland and fell in love with

the area. Worked there until 1992 when I met my husband (through my brother) and married him and moved to Lansing, Michigan. I lasted there three years and then we decided to move to Centralia where he is a pediatrician at Northwest Pediatrics Center. Recently, I discovered that my mother and her parents lived where we did in Michigan. How I wish I knew then, what I know now. Joe and I have three teenage sons. Joe is also a member of the society, but due to his work schedule has not been able to attend as he would wish. We love this area and our new found love of genealogy.

*Sharolyn Wiley*

M158. The Dakota Territory schedules were never transferred to the National Archives but are held at the South Dakota State Archives or the North Dakota State Archives, depending upon which section of Dakota Territory the individual resided.

\*\*\*\*\*

### The Forgotten Federal Census of 1885

Fall 2008, Vol. 40, No. 3

The act of March 3, 1879, which regulated the 1880 census and subsequent censuses, also requested that states and territories take a semidecennial census. This census was to be taken "during the two months beginning on the first Monday in June of the year." Each state or territory that complied with this request was to receive, from the federal treasury, 50 percent of the amount paid to all supervisors and actual enumerators within that state or territory.

In accordance with this act, censuses were taken in 1885 in the states of Florida, Nebraska, Colorado, and in the territories of New Mexico and Dakota. With the exception of the 1885 Dakota Territory census, all copies were transferred to the National Archives in 1944.

The 1885 census included four general schedules: population, agriculture, manufactures, and mortality. These schedules are organized alphabetically by county and thereunder by the number assigned to each type of schedule. Within each type of schedule the records are arranged by enumeration district.

All of the 1885 census schedules in the National Archives have been microfilmed. The schedules for New Mexico Territory can be found in Microfilm Publication M846, Florida in M845, Nebraska in M352, and Colorado in

\*\*\*\*\*

### Population Schedule

The 1885 population schedule resembles a typical census schedule and can provide valuable information that can be used to fill the gap caused by the loss of the 1890 federal census in the 1921 Department of Commerce fire.

### Agricultural Schedule

If you are looking for someone who was a farmer or otherwise involved in agriculture, look to the 1885 agricultural schedules. These schedules provide unparalleled information about what types of goods were produced and give insight into the amounts that were produced in the year prior to the census.

### Manufactures Schedule

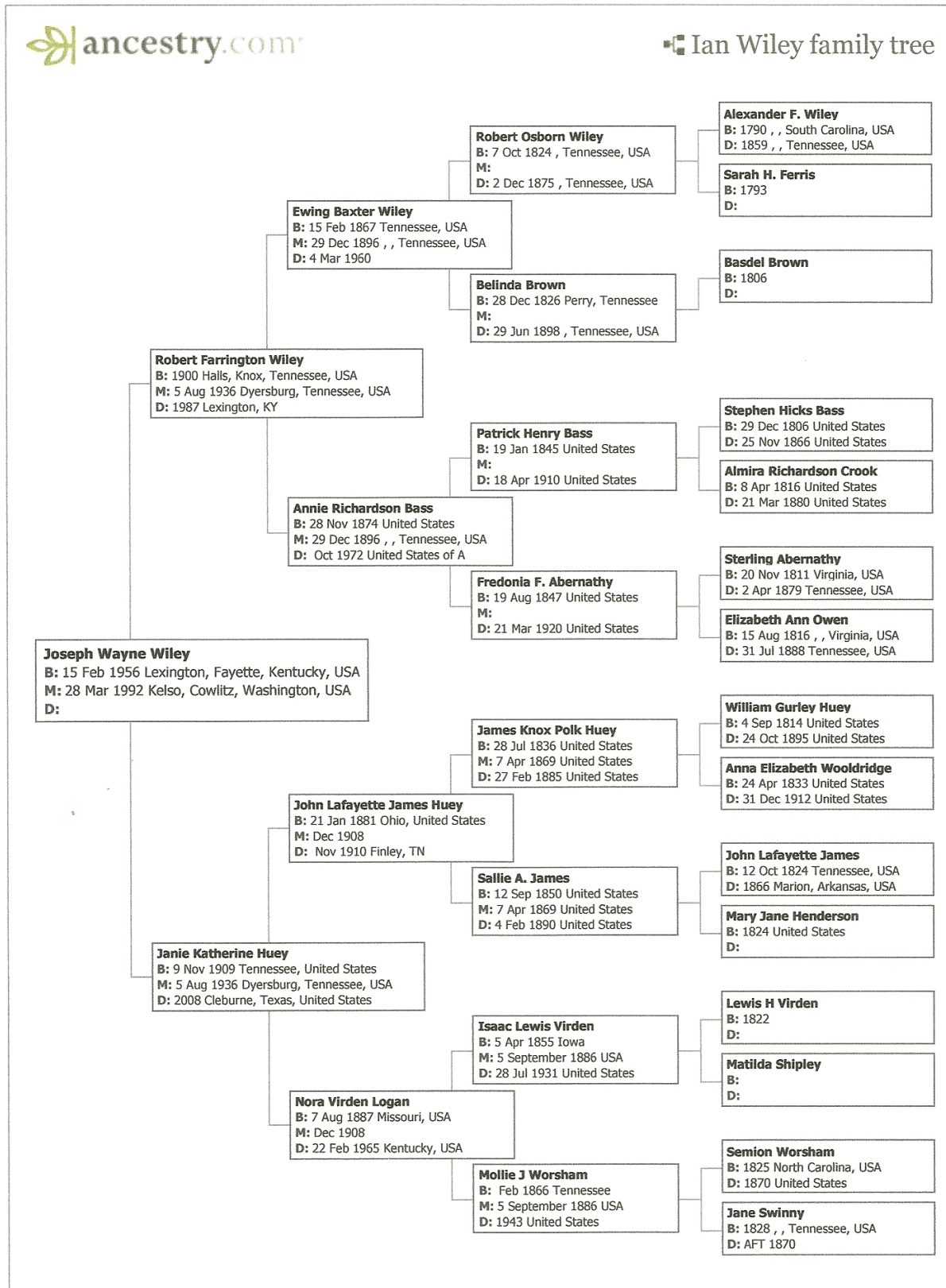
The 1885 manufactures schedule was specifically for corporations, companies, or individuals producing at least \$500 annually.

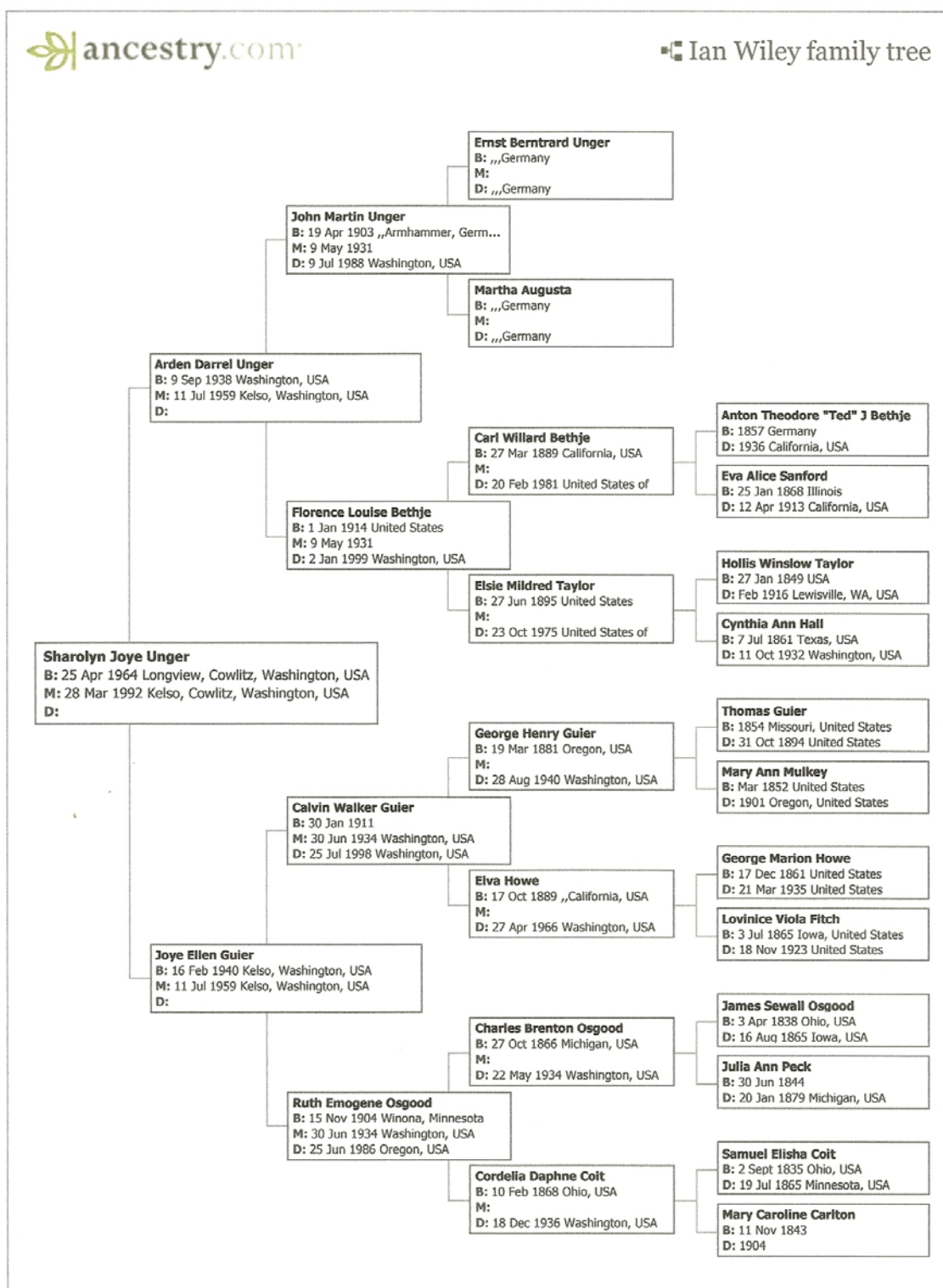
### Mortality Schedule

The 1885 mortality schedule enumerated all individuals who died between June 1, 1884, and May 31, 1885. This schedule was to include individuals who died within the district, even if they had no family in the district, and individuals who died outside the district but had family within the district.

<http://www.archives.gov/publications/prologue/2008/fall/1885-census.html>









**Membership Dues** Lewis County Genealogical Society membership runs January through December. Cost for one person is \$12 and for a couple in the same household is \$15. Membership includes a bimonthly newsletter. We meet January-June, September-November at the Lewis County PUD meeting room, 345 Pacific Avenue, Chehalis WA, on the third Tuesday evening of the months listed. Research trips are planned periodically. Please return the membership form to: LEWIS COUNTY GENEALOGICAL SOCIETY, PO BOX 782 CHEHALIS WA 98532-0782.

My/Our membership should read:

Name & Address: \_\_\_\_\_

Phone: \_\_\_\_\_

Email: \_\_\_\_\_

Preference to have newsletter by **email** \_\_\_\_\_ (attachment), or **standard postal mail**? \_\_\_\_\_

\_\_\_\_\_ Check for \$12 enclosed for 2012 membership

\_\_\_\_\_ Check for \$15 enclosed for 2012 membership

Permission to print member information in the newsletter? \_\_\_\_yes \_\_\_\_no

Please list surnames and states being researched: \_\_\_\_\_

\_\_\_\_\_

Please send a self addressed stamped envelope if you would like a membership card & or receipt.

*Lewis County Genealogical Society*  
*PO BOX 782*  
*Chehalis WA 98532-0782*

